

Mottingham News

– Autumn 2022 –



June 2022



October 2022



??February 2023

IN THIS ISSUE

2022 AGM REPORT
AIRCRAFT NUISANCE
DEFIBRILLATORS
HORTICULTURAL SHOW
JUBILEE FLOWER FESTIVAL
LIDL SUPERMARKET
TRAFFIC & PARKING
TRAIN SERVICES



MRA – Who are we? – What are we for? – What have we done? – What can we do next? – How can YOU help?

The Mottingham Residents' Association was formed in 1932 as the "Mottingham Residents and Ratepayers' Association"; a first meeting, attracting 30 residents took place in a wooden hall behind the "Prince of Wales" public house. Here Jim Fuller, Mr Thomas Ramsbottom ("Mr Mottingham") and Mr Reginald Pike explained their purpose, which was to improve life in the village, campaigning for street lighting and improved bus services whilst aiming to conserve the rural charm of the area.

Previous issues of the MRA newsletters going back to 1972 can be found in the History section of the website providing a fascinating insight into the development of the area. It seems that much effort was expended discussing antisocial behaviour and unacceptable planning applications, and traffic safety issues; nothing new there then!

Did you know that there was a plan (finally dropped by the GLC in 1973) for a six-lane extension of the M20 alongside the A20 with an interchange near the Dutch House 60 feet above ground? This was associated with two proposed 'Ringways' linking the A2 and A20. Read about it in the March 1972 and subsequent MRA newsletters.

The Residents' Association is still a key campaigner to protect the interests of Mottingham's Residents and promotes its activities through Newsletters and via its website www.yourMRA.org.

Committee meetings are held every two months in the Methodist Church Hall, and the Annual General Meeting is held in April in the Main Church Hall, behind St. Andrews Church, 233 Court Road.

Councillors for the Mottingham and Chislehurst North Ward (Bromley) and those for Mottingham, Coldharbour and New Eltham Ward (Greenwich) report to committee meetings and contribute to discussion. Meetings are also attended by Police representatives from both boroughs when available.

All our officers are volunteers and rely on the support of local

residents.

We aim to co-ordinate and provide assistance and information as well as protecting our social and physical environment. We organise decorations for Remembrance and Christmas as well as maintaining longer term installations such as the Village signs.

The MRA has (we think) one of the highest levels of resident representation in London, and has the respect of local authorities. One thing we lack is active representation from the retail sector. There seems to be little incentive for our local shops to form a collective body probably due to their small number. Nevertheless, there are some businesses who faithfully contribute to festive light installations and requests to display posters.

The function of this newsletter is to maintain contact with those residents with less physical and technical agility, and to précis and share the topics and discussions at the Annual General Meeting.

SUBSCRIPTIONS

Most residents will be familiar with our method of collecting membership fees by door-to-door visits from Road Representatives. In the past, residents needed to be present and to have cash available, but an increasing number of people wish to pay their subscriptions by secure on-line systems. We have subscribed to a cashless system with access via QR code to be found on the back of the Newsletter.

VOLUNTEERS NEEDED

We are always ready to welcome local residents (not just owners) to the Executive Committee and we also would like to have another 12 volunteers to assist with distributions to a patch of our community. The job involves 3 or 4 distributions annually, and annual collection of some subs. We try to restrict the responsibility to about 50 homes and to limit the burden on our faithful team. If you would be prepared to undertake one of these areas, please e-mail membsec@yourmra.org

REPORT OF THE ANNUAL GENERAL MEETING OF THE MRA 28th April 2022

CHAIRMAN'S REPORT

Gail Hodges took the chair for this meeting which represents a return to

normality following the disruption caused by Covid to our routines. This meeting occurred only six months from the last General Meeting in October, so the reports represented less than the usual year's activities.

The most significant item to report is the final (yes – really) outcome of the LiDL saga which had lasted for 7 long years. In March the National Planning Inspectorate gave the go-ahead to the planned demolition of The Porcupine and its replacement by a supermarket. Of the comments on the Bromley Planning portal, there was a clear majority of local respondents who opposed the development, although a significant number of local residents would welcome the addition of the Lidl budget brand to the area, particularly in view of the current increase in food prices. Both the MRA Committee and Bromley council officers still have concerns around traffic issues arising from 40 tonne delivery lorry access and increased customer car journeys.

The proposed Jubilee picnic celebrations planned for June were not to occur, but other events were scheduled including a Flower Festival (see below – Ed)

TREASURER'S REPORT

Mr Laurie Bell reported that the audited accounts were not ready for the meeting but he reported that at the end of 31.03.22 **2021/22 income** totalled £1,432. Further subscription income was received and banked **Post year end**, giving a total **2021/22** income of £2,263. Expenditure was £2,199, leaving a small surplus of £65. Significant expenses included the restoration of the village signs by a foundry in Derbyshire, (£834), membership cards, (£250), website hosting, (£76) and a donation of £500 to the Festive Lights Committee. We aim to resume 2022-23 subscription collections in the Autumn. The final audited accounts would be posted on the MRA website.

MEMBERSHIP SECRETARY'S REPORT

To date, we have 1992 addresses listed, not including the addresses added by the boundary changes. Some 140 addresses are entry-restricted. By the date of the AGM we had visited 1560 addresses and spoken with 955 occupants. 689 had paid cash or on-line with some on-line preferences still to be fulfilled. 177 had refused membership.

Fee collections were carried out by our valued band of Road Representatives.

PLANNING ISSUES

CAPEL MANOR COLLEGE Mottingham Lane.

Plans for redevelopment of the site, including increased community aspects, have been submitted and are awaiting decision. The MRA Committee were keenly supportive of the plans. which promise continuing and enhanced

community contribution.

HMOs

In the past, the MRA have expressed concern over the perceived loophole in planning rules resulting in over-development of small properties and conversion to Houses of Multiple Occupancy (HMOs) which tend to underperform in neighbourhood terms. As from 1st September, both Bromley and Greenwich council planners will no longer permit the development of HMOs under Permitted Development rights. Property owners will then be unable to commence works without planning permission.

LiDL

LiDL were finally granted permission to demolish the historic Porcupine Pub in March. LiDL wasted little time and on the 21st June the diggers moved in. By 4th July the Porcupine had gone.

OTHER PLANNING OF GENERAL INTEREST

PORCUPINE CLOSE 5G MAST – Planning Refused again

GROVE PARK ROAD 5G TELECOMS ‘UPGRADE’ Plans for telegraph poles and overhead wires were withdrawn after objections.

Planning issues of local interest are regularly monitored, and listed on the MRA Website.

AIRCRAFT NUISANCE



Residents may have noticed increased aircraft activity on certain days. Currently, changes in activity are related to wind direction since London City inbound flights from easterly sources have to approach landing from the west when the

wind is blowing from the east. This necessitates a circuit over Mottingham. However we may experience a further increase since City Airport authority is planning to expand services. The changes were put out to consultation on 1st July with responses by 9th September. This might be regarded as inadequate. The expansion plan has 3 key proposals :

- increase in annual passenger limit from 6.5 million to 9 million
- getting rid of the current curfew on flights
- increase in the number of flights permitted between 06:30 and 06:59

London City expects to consult in 2023 or 2024 on its plans for new flight paths to be linked with London and south east plans in 2025.

Developments can be followed on the HACAN website <https://hacan.org.uk/> with more detailed analysis and comment on www.hacaneast.org.uk

TRAIN SERVICES

Southeastern have published timetable changes proposed to come into effect on 11th December. On the **Sidcup Line** (serving New Eltham and

Mottingham), during the morning (6.30am-9.30am) and evening (4pm-7pm) commuter peak times, there will be a loss of 3 train services to Charing Cross and 1 service to Cannon Street, which will be partly offset by gaining 1 service direct to/from Blackfriars. The result is 18 trains to/from London at peak times (12 Charing Cross, 5 Cannon Street and 1 Blackfriars) down from 21 currently. Off-peak and weekend services direct to Cannon Street on the Sidcup Line will end. Local Councillors and the MRA have expressed extreme disappointment not only with the proposals but also with the lack of consultation or significant warning.

There is a SENine Magazine sponsored petition which can be found at :

<https://www.change.org/p/save-our-se9-train-services>

LiDL SUPERMARKET



After 7 years of planning blight and blue hoardings, the replacement of the Porcupine Pub by a LiDL supermarket was approved in March by the National Planning Inspectorate, overturning repeated refusal by Bromley Planners.

This development has engendered mixed sentiments among residents, with the long and protracted discussions raising passions. In the early stages of discussion, there was a strong desire to replace the Porcupine with a modern pub or some form of community hub which led to the application and designation of an Asset of Community Value. However, this expired before a developer with sufficient funds to meet the asking price could be found. A majority of respondents to the planning application objected to the development, mostly based on pedestrian and vehicle safety but a significant proportion of respondents favoured a LiDL budget brand store in the locality. Contractors moved in on 21st June, with no trace of the Porcupine remaining by 4th July. Within the Planning Approval, the developer is subject to various obligations within a Section 106 notice which include restrictions of construction working hours to 08:00-18:00 on weekdays and 08:00-13:00 on Saturdays. The pavement outside the library is to be narrowed, thereby widening the road to ease lorry turning.

The MRA has set up a liaison group with the constructor and will be monitoring compliance with the planning conditions.

Completion of the project is expected to be in mid-January with an expected opening date in February 2023

It remains to be seen how well founded are some of the expressed concerns around the arrival of LiDL. But we should welcome their contribution to reasonably priced and quality food in the locality. Further planning issues may well arise as a consequence of parking conditions, since there is no parking

provision for LiDL staff who will therefore be parking locally. There are currently minimal parking restrictions in the Bromley managed roads – this may need to change.

Two deliveries (40 tonnes each) per day between 08:00 and 21:00 weekdays and 10:00 to 16:00 on Sundays.

A pictorial timeline of the Porcupine from 1909 to the present can be found on the MRA website.

RETAIL ENVIRONMENT

There does seem to be some welcome upgrading of the street scene.



Hopefully this is prompted by the impending arrival of **LiDL**. New businesses have moved into Court Road and Mottingham Road and several existing

businesses have undergone refurbishment.

FLOWER BOUTIQUE now changed to a **ROCKET & BOW** eBay fashion outlet which opens monthly. Google for opening times.

LAUNDERETTE now become **DESMOND'S** Caribbean food shop.

WINGS WORLD has replaced Bob 'n' Bob's kebab shop.

BEAUTY STUDIO has replaced the Business Banking Hub

BEDROCK CAFÉ is rapidly converting to a Caribbean street-food outlet.

GOOD YEAR'S CHINESE TAKE-AWAY is to change to Sri Lankan cuisine.

RIPPIN INK tattoo studio and **ROOMS** kitchen & bathroom shop have closed and there are still some sadly empty premises.

JARMAN & DIXON PHARMACY, **MEM'S CAFÉ**, and **MOTTINGHAM SUPERMARKET** have all had welcome makeovers.

LOCAL EVENT REPORTS

JUBILEE FLOWER FESTIVAL – Methodist Church Hall

Mottingham Floral Arrangement Society held a very successful Flower Festival in the Methodist Church from the Friday to Sunday of the Jubilee Weekend in June. There were 26 Jubilee themed arrangements performed by 10 different artists, including 3 by complete novice arrangers. Over 200 visitors enjoyed the

display and the cream teas offered in the Church Hall. Donations of over £560 were shared between Water Aid and Alzheimer's Society charities. As might be expected, the displays were inspired by the royal Platinum Jubilee with a predominance of red, white and blue.

Tribute arrangements included

A Union Flag



A Crown



And, of course a Handbag – although no sign of a marmalade sandwich.

MOTTINGHAM HORTICULTURAL SOCIETY SHOW

The Horticultural Society welcomed some 350 visitors to view over 300 entries on August bank holiday Saturday. There was no doubt that the horticultural offerings had been severely affected by the recent prolonged heatwave and drought although visitors were able to enjoy the weather. Teas and cakes were enjoyed as usual accompanied by the Mottingham Concert Band who played a medley of summery numbers. Most exhibitors had noted significant change in the season with many vegetable classes depleted. One regular contributor suggested change of use of his runner beans to flooring nails. The usual magnificent displays in the rose, dahlia and gladioli classes were almost absent. However, artistic and manual skills were well represented in the craft and flower arrangement Classes.

There was a Jubilee theme to the flower arranging classes



A street-party centrepiece



Precious jewels



Parade & Procession

A fruit cake in the baking section made such a good impression on the judges that it won Best Exhibit in Show.



Other entrants had made jams, chutneys and wines from their produce.

This year the junior classes were particularly well contested.

We are grateful to Eltham College for use of the hall and support, and to all those who helped with set-up and take-down. We will always welcome new MHS members but would also welcome any generous folks who could offer assistance on the day. This year the catering team were severely stretched and almost exhausted the supply of cakes as well as themselves.

Volunteers Wanted. The future of the Horticultural Show depends entirely on the goodwill and energy of a group of helpers. Most of the setting up activity takes place on the day and morning before the show, and helpers are also needed to clear up after the show. If you are able and willing to join the team, or would like to join the Horticultural Society as well, please e-mail horty@yourmra.org.

NEWS UPDATES

Village Signs

Following collapse of one of the Mottingham Village signs, we undertook to remove, refurbish and reinstate the signs. We are grateful to Laurie Bell for arranging the process and transport to and from the foundry in the midlands.

Mottingham On The Map

Greenwich Ward Councillors, strongly supported by the MRA, persuaded the Boundary Commission to add 'Mottingham' to the Coldharbour & New Eltham title. The ward also now includes The Tarn, Tarnwood Park, Woodmere and the lower stretch of Middle Park Avenue. Residents in these areas were surveyed by their new Ward Councillors and invited to express any interest in being represented by the MRA. The outcome of the survey was inconclusive, but all Mottingham residents are welcome.

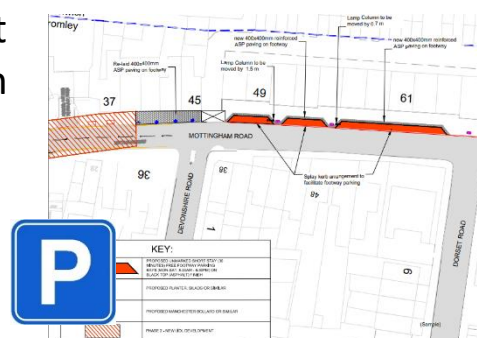
Parking & Planters

Bromley Council has finalised a revised pavement parking scheme outside the shops in Mottingham Road. The scheme involves capacity for 8 cars with redesigned bays no longer overlapping the carriageway. Permanent planters are incorporated in the design which can be viewed via the MRA website. Construction is expected to start after the Christmas break. Cashless parking charges are to be introduced.

Planters are being installed by both Bromley and Greenwich councils. We will be directly involved and will be seeking volunteers to assist with ongoing planting and maintenance jobs.

Traffic Issues

Cllr Matt Hartley (LBG) reported to the June meeting of the MRA Executive Committee that two West Hallows residents spoke very eloquently at the recent Greenwich Highways Committee meeting. Results of the extensive



traffic survey of residents showed that the 20mph speed limit is ineffective. It was also noted that a blanket LTN would not be practical. Data shows that the problem is worsening. The three Greenwich ward councillors support the residents in their opposition to an LTN. Their report will go to a full Council meeting. It is proposed that funding be sought from TfL to look at four models and understand their implications/effectiveness.

1. Close off access to the A20 from West Hallowes.
2. Make West Hallowes one way from West Park.
3. No left turn from West Park.
4. Width restriction at the top of West Hallowes.

This may take up to a year. Traffic issues relating to Court Road are for TfL to consider and the Council will be promoting the concerns.

Defibrillators

Automatic External Cardiac Defibrillators (AEDs)

Initial discussion in the MRA executive committee was prompted by our chairman Gail Hodges, a retired GP. The proposal to instal a single defibrillator was keenly adopted by the committee, and Eltham College sixth form charitable support was generously offered.

Further donations from Bromley and Greenwich Councils allowed the possibility of further installations. Mention of the proposals in the last newsletter prompted further support from public spirited individuals.

Three AEDs have now been purchased by the MRA. The AEDs will remain in the ownership of the MRA for insurance and maintenance purposes and will be added to a monitoring and maintenance schedule. All the devices are added to the national register for the awareness of the emergency services.



The first two of these have now been



installed, one outside the library (left) and the second outside Our Lady Help of Christians Catholic church hall in Leysdown Road (below)

The third is imminently to be installed at the changing rooms on Foxes Field.

Local sessions in the use and value of their operation are to be arranged.

Anyone interested should email chair@yourmra.org.

Further training sessions will be notified on the MRA website

We are grateful to Gail Hodges for the logistical efforts of purchase and installation, and to Roger Tester of RMT Electrical Services, our former Greenwich Ward Councillor, who has donated time and skills as a qualified electrician. We are also grateful to the Bromley Library Services and Our Lady Help of Christians church who have facilitated the installations and undertaken to provide the electricity supply for the charge units.

BEWARE THE SCAMMERS

Bromley Council website has useful information on Scammers and Rogue Traders and allows you to register for trading standard alerts.

<https://www.bromley.gov.uk/scams>

Advice is also offered on reporting.

REPORTING LOCAL ISSUES

EMERGENCY POLICE/FIRE/AMBULANCE dial 999

Police Non-Emergency – report on 101 or contact via MRA website

GAS LEAKS should be reported urgently on 0800-111-999

WATER LEAKS should be reported to **Thames Water** via their website

<https://www.thameswater.co.uk/>

POTHoles, FLY-TIPPING and pavement issues are best reported on **FixMyStreet** websites. Links to these may be found on the Councils page on the MRA website. (QR right)



Upcoming Events

WAR MEMORIAL REMEMBRANCE SERVICE Sunday 13th Nov



Our grade 2 listed structure will once again be the focus of a Remembrance service coordinated by Churches Together in Mottingham with musical accompaniment by the Mottingham Concert Band. Road closures will be in place between 09:30am and 1:00pm on Sunday 13th November.

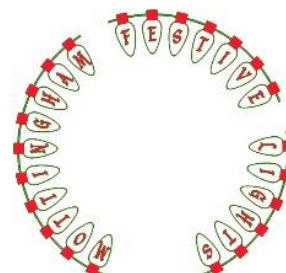
FESTIVE LIGHTS

This year's appeal letter is included with this Newsletter.

We would encourage residents to support this initiative as generously as they are able.

CHRISTMAS TREES

The MRA will again erect and decorate a tree in the garden of the Methodist Church.



CHILDRENS' CHRISTMAS PAINTING COMPETITION

Look out for this event open to all juniors.

Last year's Paintings may be viewed at <https://flic.kr/s/aHBqjzCWHQ>.

MOTTINGHAM VILLAGE CONCERT BAND - CHRISTMAS CONCERT

14th December 7.30 pm Maryfield Hall – Our Lady Help of Christians Church, Leysdown Road. A selection of seasonal music conducted by Leslie Lake

MIDWEEK LUNCH – ALL WELCOME

Mottingham Methodist Church Hall

Every Wednesday at 12:30

Doors open 11:00 for chat and coffee

No need to book - £ 3.00 donation



MOTTINGHAM RESIDENTS' ASSOCIATION

CURRENT OFFICERS AND EXECUTIVE COMMITTEE OFFICERS

All may be contacted via website

CHAIRMAN	Gail Hodges		
TREASURER	Laurie Bell		
DEPUTY CHAIRMAN	Richard Mainwaring-Burton		
SECRETARY	Lesley Robins		
MEMBERSHIP SECRETARY	Richard Mainwaring-Burton		
AUDITOR	Bernie Hawes		
EXECUTIVE COMMITTEE MEMBERS :			
Sally Bettesworth	Bob Blanks	Carol Borhani	Astrid Chklar
Jane Cornish	Bob Lawrie	James Martin	Graham Soars



MRA Website -
www.yourmra.org

©Published by Mottingham Residents' Association

We are grateful to the Reprographics Department at Eltham College for generous preparation assistance

PAYMENT OF SUBSCRIPTIONS

£ 3.00 Subs

To pay subs scan the "£3.00 Subs" QR code.



Should you feel generous enough to pay more, please scan the "Donate" QR code and Pay the £3.00 plus your donation.

Donate



CASH PAYMENT

Please call or text 07831-739-876 and we will arrange for a representative to call.

BACS transfer may be made to :

Name : Nottingham Residents' Association

Sort code : 20-98-57 **Account No.:** 30666912

If you pay on line – please indicate your house number and postcode as reference.